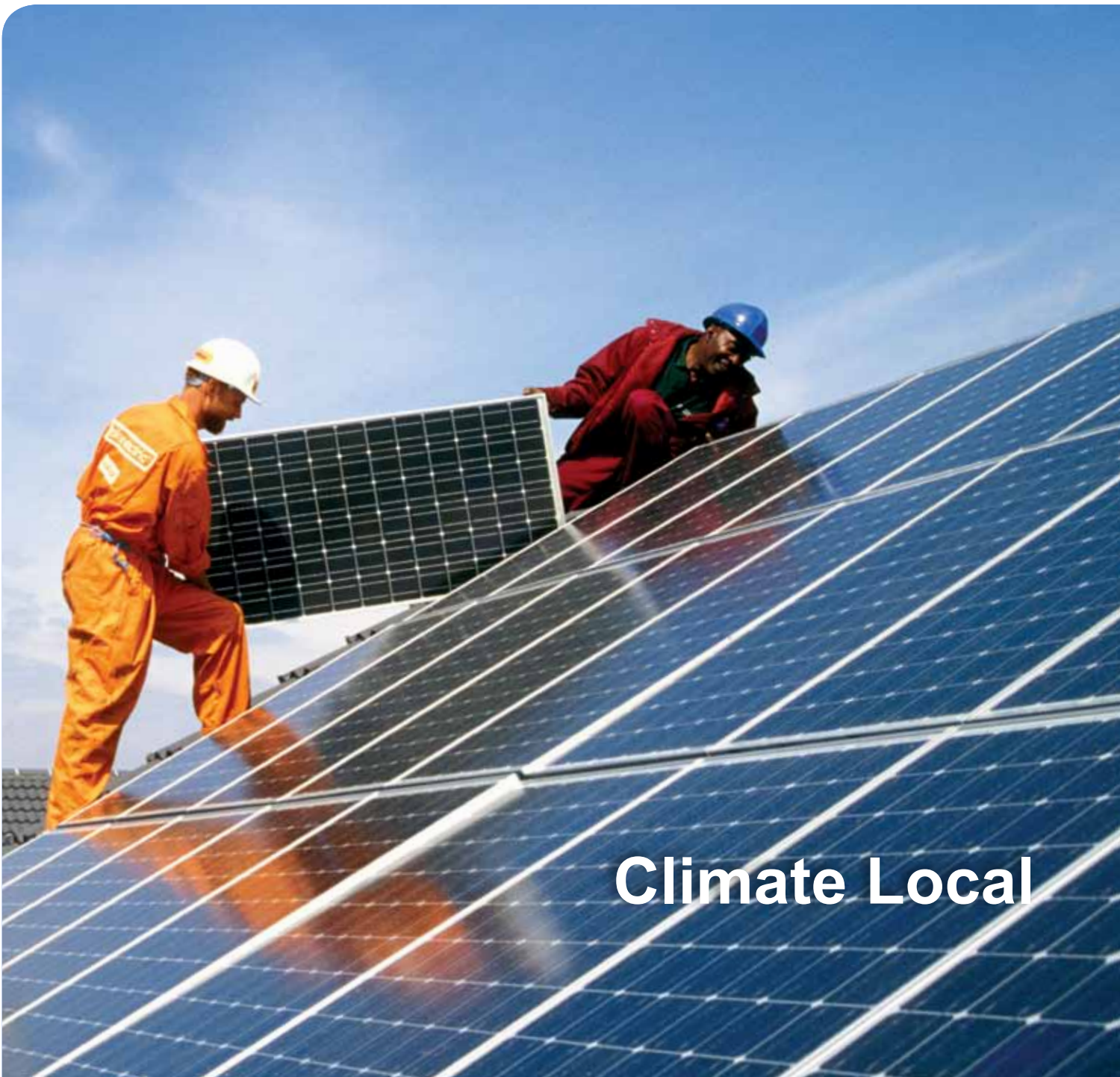


Climate Local

Information pack for councils



Climate Local

Foreword

Councils and their communities face major challenges around local energy and the changing climate. Over the last year we have seen significant rises in energy prices squeeze finances for councils, residents and businesses, and the wettest year on record bring significant flooding.

Climate Local is the LGA's initiative to support and share the work that councils are doing to respond to these challenges – including to boost renewable energy supply, to reduce utility bills for councils and residents, to support local growth and jobs, and to plan for extreme weather events.

The Climate Local network provides an important platform for council-led action and a forum to support learning. By signing-up, individually or in partnership, councils make a public commitment to tackle local priorities such as fuel poverty, green jobs, or local flood-risk, and agree to share progress with other councils.

As Leader of Cheshire West and Cheshire council I was delighted to join the network. I look forward to sharing our work on renewables and resilience, and to hearing from other councils.

Councillor Mike Jones

Chairman,
LGA Environment and Housing Board



Cllr Mike Jones and Cllr Hugo Deynman sign the Climate Local commitment, November 2012

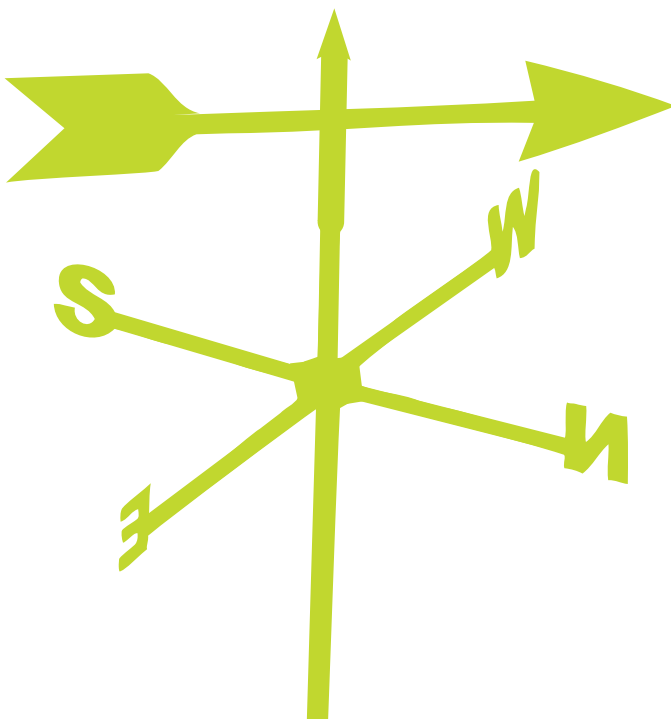
What is Climate Local?

Climate Local is an LGA initiative to drive, inspire and support council action on a changing climate. The initiative supports councils' efforts both to reduce carbon emissions and also to improve their resilience to the affects of our changing climate.

Climate Local is helping councils across the country to realise the opportunities and capture the benefits of action on climate change, including saving on their energy bills, generating income from renewable energy, attracting new jobs and investment in 'green' industries, reducing flood risks, tackling fuel poverty and protecting our natural environment.

It consists of:

- a Climate Local Commitment – for councils to sign to demonstrate their commitment to addressing climate change and to challenge themselves to build on their existing achievements
- a set of topic-based guides and templates to help guide councils in setting local commitments and milestones and reaching their ambitions
- new web-based resources and support - an online community and opportunities for peer learning
- a Climate Local Steering Group - bringing together nominated members of the LGA's Environment and Housing Board, council representatives and national partners.



How will it help councils?

Becoming a Climate Local council provides a way to show council leadership on climate change. It enables councils to demonstrate leadership individually – to their communities, stakeholders and peers – and collectively – to Government and other national stakeholders.

The Climate Local initiative aims to:

- drive and inspire councils to act on the causes and effects of climate change
- enable councils to demonstrate their commitment, ambition and achievements
- enable councils to show collective leadership on climate change
- provide a framework through which councils can organise and plan their journey in addressing climate change
- provide a forum for peer-to-peer learning and support for councils.

The first step to becoming a Climate Local council is signing up to the Climate Local commitment (See Annex 1 – Climate Local Commitment).

Sir Merrick Cockell, Chairman of the LGA:

“The aim of Climate Local will be to drive and champion council-led action on climate change in a way which will ensure local authorities can get the best results and value for money with the resources they have available.”

**Cllr Paul Carter, Leader of Kent County Council,
Chairman of the Kent Forum:**

“Climate Local is great opportunity for us to show leadership and practical action to cut energy bills for hard-pressed local families and businesses. We’ll set local targets to address real priorities.”

**Cllr Alan Clark, Portfolio Holder for Energy and Sustainability,
Nottingham City Council**

“We are really proud to be signing this agreement and to build on Nottingham’s heritage and achievements in tackling climate change. We will continue to improve our own energy use, create affordable energy for the city and encourage the growth of ‘green’ jobs. Climate Local will work with local people to set local action plans to tackle climate change.”

How can my council get involved?

By signing the commitment, your council will be asked to:

- set out the actions you intend to undertake locally to reduce carbon emissions and respond to changes in the climate within your own operations, your services and with your local community.
- set out your level of ambition and how you are going to monitor and demonstrate your achievements.
- Share with other councils and with national partners:
 - the actions you are undertaking and your ambitions
 - your progress
 - the learning from your experiences and achievements.

Support for councils to develop commitments and actions is available through the LGA website (www.local.gov.uk/climate-change).

Examples of council commitments and actions are available through the **Climate Local Network** group. To join go to: <https://knowledgehub.local.gov.uk>



How does Climate Local work?

Becoming a Climate Local council involves a four-stage cycle.

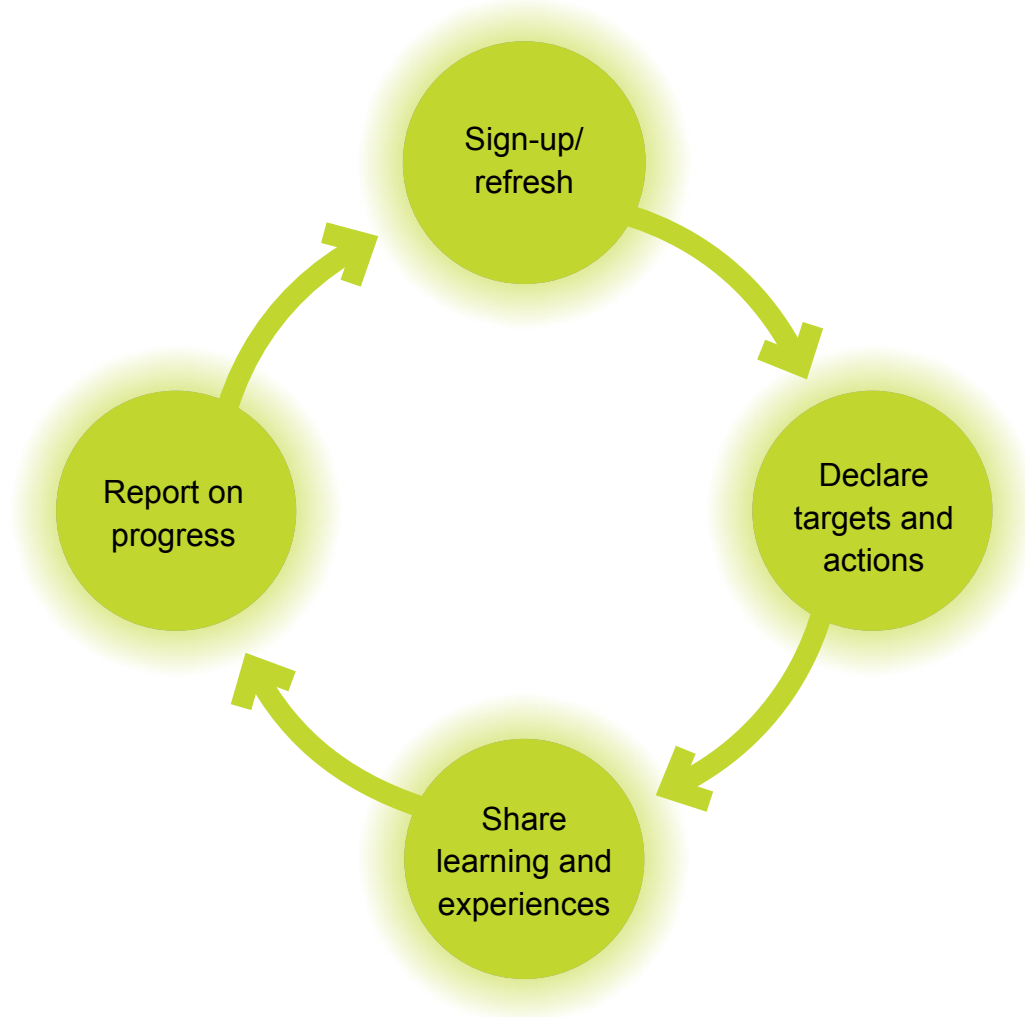


Figure 1. The Climate Local cycle

1. Sign-up to the Climate Local commitment

The first step is to sign-up to the Climate Local commitment [See Annex 1 – Climate Local Commitment]. You can sign up as an individual council or as a group of authorities.

LGA will then add you to the interactive map on the LGA website and will welcome you into the Climate Local family, signposting you to sources of support to help you on your journey.

To view the map online go to: www.local.gov.uk/climate-change

2. Declare commitments and actions

Once you have signed-up, you will be asked to set out the commitments and actions you intend to undertake locally. You will be asked to do this within six months of signing-up.

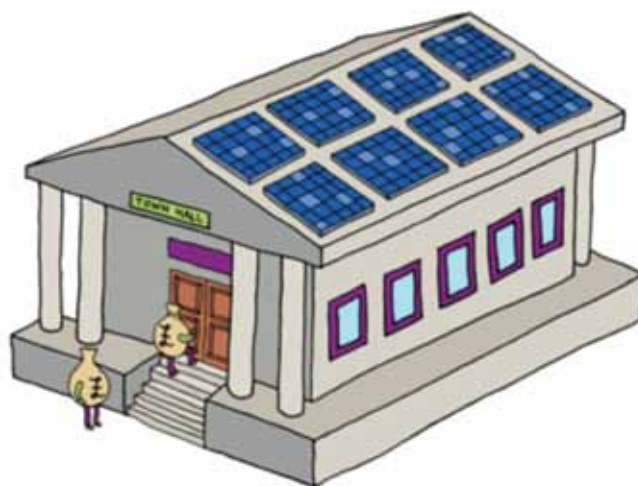
Whilst it is up to councils to determine their own local commitments and actions, all councils should be able to put forward a number of commitments and actions across the mitigation and adaptation agendas. However, care needs to be taken to ensure that the commitments are realistic and deliverable. So before setting your commitments think about:

- **How will you use Climate Local?** Are you just starting out in developing your response to climate change? Or are you using it as an opportunity to reiterate or reinvigorate your existing commitments, or to stimulate new action?
- **What are your priorities?** It will be important to take a strategic approach to Climate Local. Understanding your baseline position in terms of carbon emissions and climate vulnerability will help you to work out where best to focus your efforts and enable clear priorities to be set.
- **What level of resources is available for delivery?** The Climate Local topic guides include advice about funding sources but you also need to think about your internal staff resources and the resources of partner organisations for delivering on the commitments you make, monitoring progress and sharing your learning and experiences.

- **How will you report on and share progress?** Climate Local asks councils to share progress on their commitments and actions and provides a light-touch template for doing this. However, think about whether the commitments and actions you are signing-up to are manageable in terms of reporting and sharing progress.

The LGA have a template for you to set out your chosen commitments and actions [See Annex 2 – Commitments and Actions Template]. Actions should be specific, measurable and time bound.

LGA have also provided a menu of possible commitments and actions that is available through the Climate Local network. Councils are encouraged to adapt these suggestions to suit their own priorities and also to create their own locally-determined commitments and actions.



3. Sharing learning and experiences

As a Climate Local council you will be actively encouraged to share your learning and experiences with other councils. The Climate Local network on the LGA Knowledge Hub provides an interactive space for councils to share case studies and materials and to swap advice.

The LGA will also facilitate opportunities for face-to-face learning for Climate Local councils – including a Climate Local conference in March 2013. We will also publish your commitments and actions so that we demonstrate how councils are taking a lead.

4. Sharing progress

To celebrate your achievements and to let your communities and stakeholders know how you are getting on, you will be asked to share progress on your commitments and actions once a year.

We have provided a simple template for you to do this [See Annex 3 – Sharing Progress Template].

1 (again!). Refresh your commitments and actions

Every year, we will ask that you refresh your commitments and actions to ensure that they remain current and relevant to local priorities.



How is the LGA supporting Climate Local?

The LGA is supporting Climate Local by:

- promoting the initiative to councils and running the sign-up process
- providing a forum for councils to share their ambitions, progress and learning through the Climate Local network
- facilitating the Climate Local Steering Group which provides a forum for councils to raise issues with Government and partners
- championing individual and collective council good practice through a range of initiatives including events, reports, website features, and e-bulletins.

For more information please contact:

Kamal Panchal

LGA Senior Advisor,
Environment and Housing

kamal.panchal@local.gov.uk

Local Government Association
Local Government House
Smith Square
London SW1P 3HZ

Annex 1

The Climate Local commitment

Climate Local [insert council(s) name]:

Our commitment to taking action in a changing climate

We recognise that our council has an important role to help our residents and businesses to capture the opportunities and benefits of action on climate change. These include saving money on energy bills, generating income from renewable energy, attracting new jobs and investment in 'green' industries, supporting new sources of energy, managing local flood-risk and water scarcity and protecting our natural environment.

We will progressively address the risks and pursue the opportunities presented by a changing climate, in line with local priorities, through our role as:

- community leader – helping local people and businesses to be smarter about their energy use and to prepare for climate impacts
- service provider – delivering services that are resource efficient, less carbon intensive, resilient and that protect those who are most vulnerable to climate impacts
- estate manager – ensuring that our own buildings and operations are resource efficient, use clean energy, and are well prepared for the impacts of a changing climate.

In signing this commitment, **we will:**

- **set locally-owned and determined commitments** and actions to reduce carbon emissions and to manage climate impacts. These will be specific, measurable and challenging
- **publish our commitments, actions and progress**, enabling local communities to hold us to account
- **share the learning from our experiences and achievements** with other councils
- **regularly refresh our commitments and actions** to ensure they are current and continue to reflect local priorities.

[Date]

[Name of council or group of councils]

[Signature of Leader or Mayor of Council]

Annex 2

Commitments and actions template

Climate Local [insert council name]:

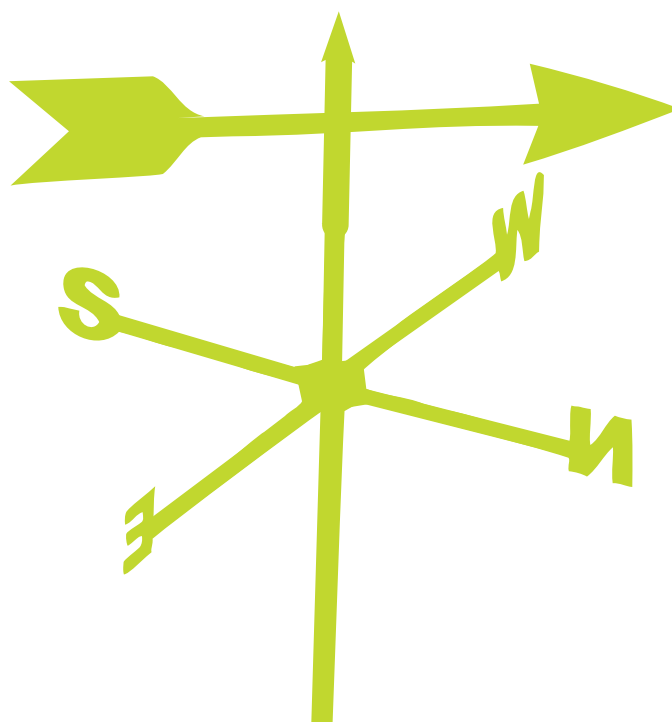
Our commitments and actions

_____ Council(s)

signed the Climate Local Commitment on _____ [date]
in recognition of the important role that local authorities have in tackling climate change.

In signing the Commitment we pledge to set locally-owned and determined targets and actions on both mitigation and adaptation and publish these within six months.

The table below sets out our priorities commitments the actions will undertake to deliver them. We will monitor our performance against these actions and report regularly on our progress. We will also regularly refresh this list of actions to ensure they are up-to-date and reflect local priorities.

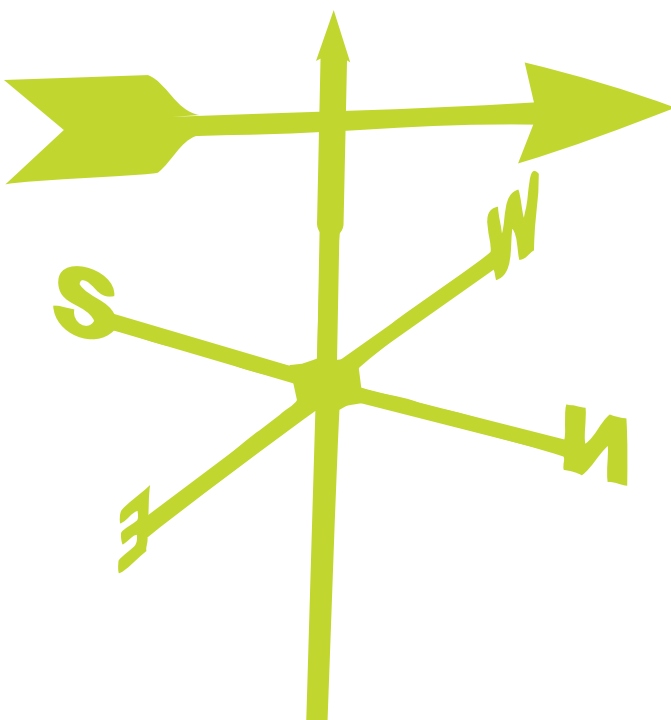


Low carbon pathways

In order to create an 'energy smart' low carbon future we make the following commitment(s):

Commitment:		
Justification:		
Specific action(s)	Measure	Timescale

Commitment:		
Justification:		
Specific action(s)	Measure	Timescale



Worked example:

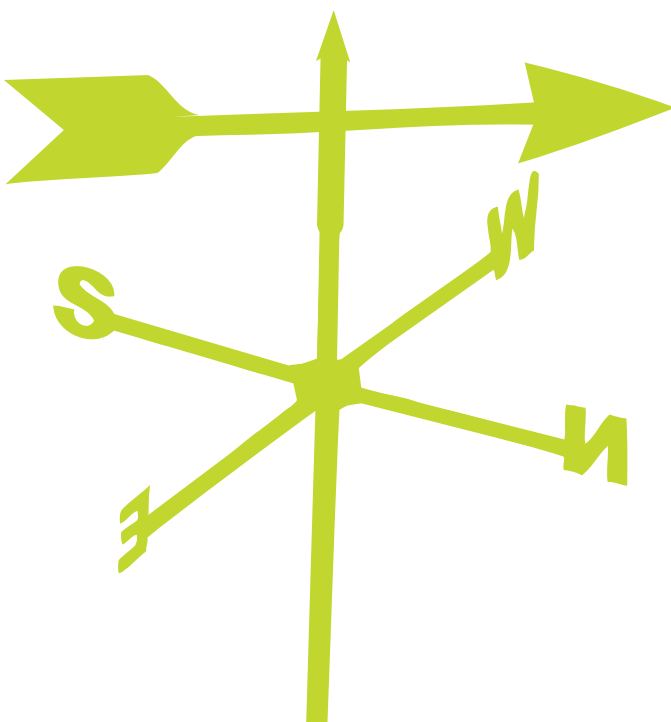
Commitment: We will reduce carbon emissions in the housing sector by 20 per cent on 2010 levels by 2020		
Justification: 50 per cent of the area's carbon emissions come from the housing sector		
Specific action	Measure	Timescale
We will go out to tender to secure a Green Deal provider	Green Deal provider will be in place	March 2013
Roll out a free loft insulation programme for the elderly and fuel poor	10,000 lofts will be insulated or topped-up	2016
We will run a Green Deal promotional campaign aimed at private householders	10,000 residents will receive Green Deal information packs Green Deal information pages published on council website	By December 2013

Climate resilience

In order to adapt to the risks and opportunities that our changing climate will present, we make the following commitment(s):

Commitment:		
Justification:		
Specific action(s)	Measure	Timescale

Commitment:		
Justification:		
Specific action(s)	Measure	Timescale



Worked example:

Commitment: We will ensure that flood risk is understood and planned for		
Justification: We have a good understanding of tidal and fluvial flood risk but a poor understanding of surface water flood risk		
Specific action	Measure	Timescale
We will work with the Environment Agency and other partners to develop an improved map of whom and what is at flood risk from all sources of flooding today, and to predict future flood risk for all flood sources.	Flood mapping results published	March 2014
We will develop a surface water management plan which identifies and prioritises areas at risk and develops more detailed plans for the priority areas.	Surface water management plan published	December 2012

Guidance notes for councils

1. Complete at least one action on mitigation and one on adaptation. Use the Menu of Local Commitments and Actions to guide your choice of actions, or feel free to create your own.
2. Use the Menu of Local Commitments and Actions to guide your choice of commitments. This menu is not exhaustive and councils are welcome to include and develop their own commitments to suit local priorities.
3. For each action, please be Specific (what is you want to achieve, how will you go about achieving it), ensure it is Measurable (how much, how many, how will you know when the action or target is accomplished) and Timebound (when will it be achieved).
4. When completed and published, please send to the LGA

Annex 3

Sharing progress commitment

Climate Local [insert council name]:

Our progress on [insert date]

Since signing up to Climate Local on _____ we have made the following progress towards achieving the commitments and actions we pledged on _____.

Mitigation

1.	Progress
Commitment:	[provide a summary of progress in achieving this commitment overall to date]
[insert commitment]	
Action(s):	Progress
[insert actions]	[provide a summary of progress in achieving this action to date]

Adaptation

1.	Progress
Commitment:	[provide a summary of progress in achieving this commitment overall to date]
[insert commitment]	
Action(s):	Progress
[insert actions]	[provide a summary of progress in achieving this action to date]



Local Government Association

Local Government House
Smith Square
London SW1P 3HZ

Telephone 020 7664 3000

Fax 020 7664 3030

Email info@local.gov.uk

www.local.gov.uk

© Local Government Association, January 2013

For a copy in Braille, larger print or audio,
please contact us on 020 7664 3000.
We consider requests on an individual basis.

L12-985